

Design 1907 • SMC select PERTINIO

Ladie's Jacket

Instructions are given for first size. Figures in parenthesis refer to larger sizes. When only one figure is given, it applies to all sizes.

Materials: approx. 10 (11, 12, 13, 14) balls (approx. 110yd/100m each) of SMC select **Pertinio** (82% cotton, 14% viscose, 4% Lurex) in col 01903 white and approx. 1 ball in col 01902 midnight.
 Size 6 [4mm] needles, cable needle [cn]. 3 hook-and-eye closures in gold [by Union Knopf, item 658178].

Trim Pattern: trim is worked after all pieces have been knit. Work according to chart. Chart shows RS of pattern. Beg with a WS row. Work WS rows from left to right, work RS rows from right to left.
 Work rows 1-9 once, working rows 1-3 with midnight and rows 4-7 with white, then work rows 8 and 9 with midnight. Work 1 additional selvage st at each edge.

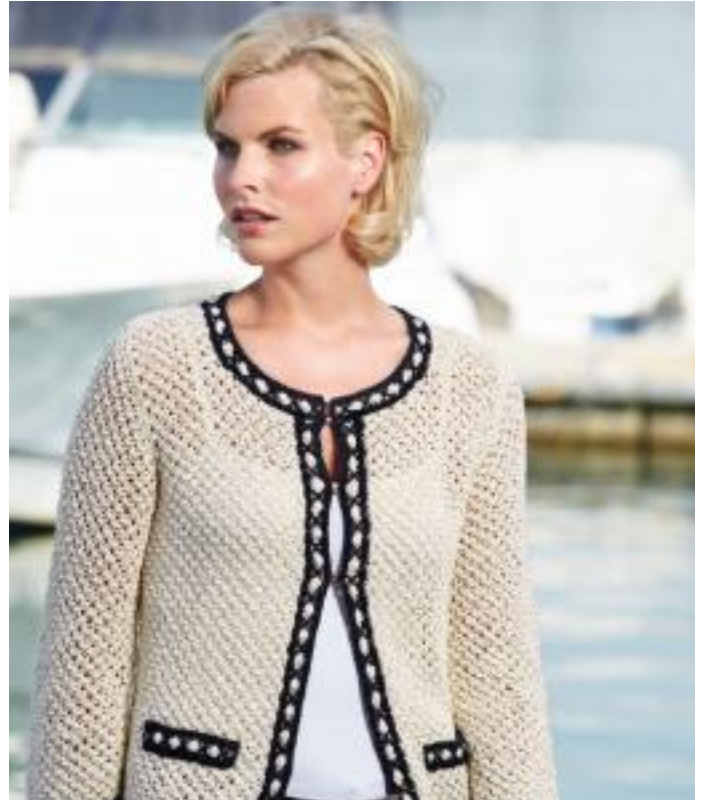


Chart for Trim Pattern

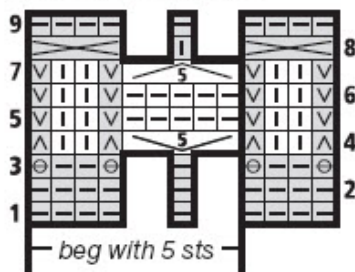
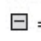
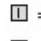
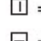
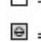
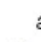
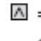
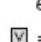
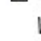
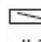
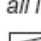


Chart key

Blank squares on charts represent "no stitch" and are included to keep st count correct

-  = with midnight, k1 on WS, p1 on RS
-  = with midnight, k1 on RS
-  = with white, k1 on RS, p1 on WS
-  = with white, k1 on WS, p1 on RS
-  = with midnight, p1, wrapping yarn around needle 3 times [= 2 yo's]
-  = on RS, sl1 pwise, dropping all yo's to elongate sts; yarn is at back of work
-  = sl1 pwise; yarn is at front of work on WS and at back of work on RS
-  = with white [k1, yo, k1, yo, k1] all in same st – 5 sts
-  = with white, k2tog, then k3tog, then pass 2nd st over first st
-  = sl3 to cn and hold in back of work, k1; sl elongated st from cn back to LH needle, k2 from cn, k1

Main Pattern: multiple of 3 + 1 + 2 selvage sts.

Row 1 [WS]: p.

Row 2: selvage st, k1, * yo, k3, pass first of these 3 sts over 2nd and 3rd st, rep from *, selvage st.

Row 3: p.

Row 4: selvage st, * yo, k3, pass first of these 3 sts over 2nd and 3rd st, rep from *, k1, selvage st.

Repeat rows 1-4 throughout.

Gauge: 19 sts and 28 rows = 4" [10 cm] in main pat; 20 sts and 9 rows = 4" x 1" [10 x 2.5cm] in trim pat.

Back: with white, cast on 84 (90, 99, 108, 117) sts and work in main pat until back measures 13½ (12½, 11¾, 11, 10¾)" [34 (32, 30, 28, 27) cm]. Shape armhole: bind off 3 (3, 6, 6, 6) sts at beg of next 2 rows, 3 sts at beg of foll 4 rows – 66 (72, 75, 84, 93) sts.

Cont in pat as established until back measures 19¾" [50 cm]. Shape neck: work to center 24 (24, 27, 30, 33) sts, join another ball of yarn, bind off center 24 (24, 27, 30, 33) sts, work to end. Working both sides at same time, bind off 3 sts at each neck edge once.

Size	XS	S	M	L	XL
Front and Back					
Width, back	17" [43cm]	18" [46cm]	20" [51cm]	22" [56cm]	23¾" [60.5cm]
Width, front	8¼" [21cm]	9" [22.5cm]	10" [25.5cm]	11½" [29cm]	12" [30.5cm]
Armhole width	2" [5cm]	2" [5cm]	2½" [6.5cm]	2½" [6.5cm]	2½" [6.5cm]
Armhole depth	7" [18cm]	7¾" [20cm]	8¾" [22cm]	9½" [24cm]	9¾" [25cm]
Neck width, back	6¾" [17cm]	6¾" [17cm]	7" [18cm]	7¾" [20cm]	8½" [21.5cm]
Neck depth, back	¾" [2cm]	¾" [2cm]	¾" [2cm]	¾" [2cm]	¾" [2cm]
Neck width, front	3¼" [8cm]	3¼" [8cm]	3½" [9cm]	4¼" [11cm]	4¼" [11cm]
Neck depth, front	4" [10cm]	4" [10cm]	4" [10cm]	4" [10cm]	4" [10cm]
Shoulder width	3¼" [8cm]	3½" [9cm]	4" [10cm]	4½" [11.5cm]	5" [13cm]
Total length	21½" [54.5cm]	21½" [54.5cm]	21½" [54.5cm]	21½" [54.5cm]	21½" [54.5cm]
Sleeves					
Cuff width	11¾" [30cm]	12½" [32cm]	13¾" [35cm]	14½" [37cm]	15¾" [40cm]
Length to armhole	12½" [32cm]	12½" [32cm]	12½" [32cm]	12½" [32cm]	12½" [32cm]
Total length	16¼" [41cm]	16¼" [41cm]	16¼" [41cm]	16¼" [41.5cm]	16¾" [42.5cm]

When back measures 20½" [52 cm], bind off remaining 18 (21, 21, 24, 27) sts for each shoulder.

Left Front: with white, cast on 42 (45, 51, 57, 60) sts and work in main pat until left front measures same length as back to armhole. Shape armhole at right edge same as for back – 33 (36, 39, 45, 48) sts.

Cont in pat as established until left front measures 16½" [42 cm]. Shape front neck: bind off 9 (9, 12, 15, 15) sts at left edge once, 3 sts twice.

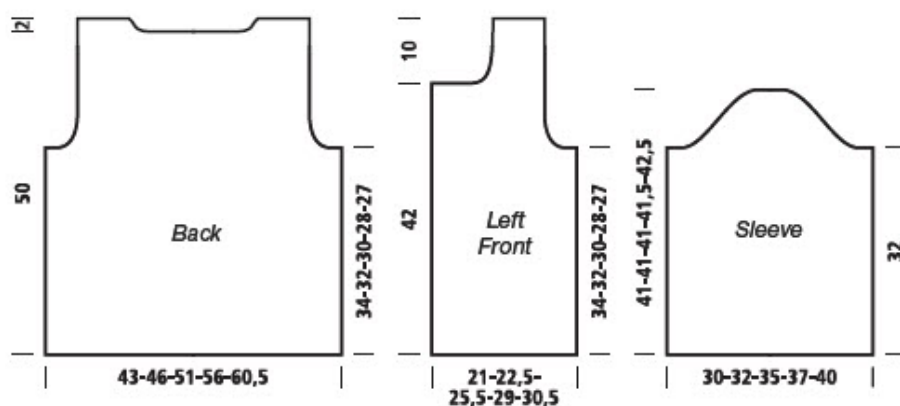
When same length as back to shoulder, bind off remaining 18 (21, 21, 24, 27) shoulder sts.

Finishing: pin pieces to measurements and block with damp towels. Sew shoulder and side seams. With midnight, pick up and k 171 (181, 206, 226, 241) sts along cast-on edge of fronts and back and work in trim pat according to chart as foll: selvage st, work 5-st pat rep to last 4 sts, work first 4 sts of pat rep, selvage

st. Work through chart row 9, then bind off all sts in purl with midnight.

Right front trim: with midnight and beg at lower edge of right front, pick up and k 91 sts along right front edge and work in trim pat according to chart as foll:

selvage st, work 5-st pat rep to last 4 sts, work first 4 sts of pat rep, selvage st. Work through chart row 9, then bind off all sts in purl with midnight. Beg at top edge of left front, work left front trim same as for right front trim. With midnight, pick up and k approx. 121 (121, 131, 141, 146) sts around neck edge incl right and left front trim and work in trim pat same as for front edge trim. Faux pocket trim [make 2]:



Right Front: work same as for left front, reversing all shaping.

Sleeves: with white, cast on 60 (63, 69, 72, 78) sts and work in main pat until sleeve measures 12½" [32 cm], ending with a pat row 4.

Shape sleeve cap: bind off 3 (3, 6, 6, 6) sts at beg of next 2 rows, 2 sts at beg of foll 24 (24, 24, 26, 28) rows, then bind off remaining 6 (9, 9, 8, 10) sts.

With midnight and RS facing, pick up and k 62 (67, 72, 77, 82) sts along cast-on of sleeve and work in trim pat according to chart as foll: selvage st, work 5-st pat rep 12 (13, 14, 15, 16) times, selvage st. Work through chart row 9, then bind off all sts in purl with midnight.

with midnight, cast on 26 sts and work in trim pat according to chart for 9 rows, then bind off all sts in purl with midnight.

Sew sleeve seams. Sew in sleeves.

Sew faux pocket trim to fronts, approx. 2¼" [6 cm] up from lower edge trim and approx.

1¼" [3 cm] in from front edge trim [see photo].

Sew hook-and-eye closure to fronts, sewing first closure to center of neck edge trim and remaining closures approx. 3¼" [8 cm] apart.